



Waterproof Telephone

- SMC housing with UV-resistant powder coating
- Protection level IP66
- Advanced noise reduction technology for HD calls
- Corrosion-resistant hardware
- CE, FCC, RoHS, ISO9001 standards



MAIN FEATURES

The JR506 is a robust and durable industrial telephone housed in a vandal-resistant, corrosion-proof SMC enclosure. Its anti-tamper design and high shock resistance ensure a long service life with exceptional reliability and stability.

All electronic components are industrial-grade, capable of operating reliably in extreme temperatures ranging from -40°C to +70°C, making it ideal for installations in harsh environments that require high levels of protection.

Specifically designed for internal communication in nuclear power plants, the JR506 features outstanding noise reduction performance. It is also suitable for power plants, large industrial facilities, underground utility tunnels, mining operations, subway platforms, airports, and maritime ports.

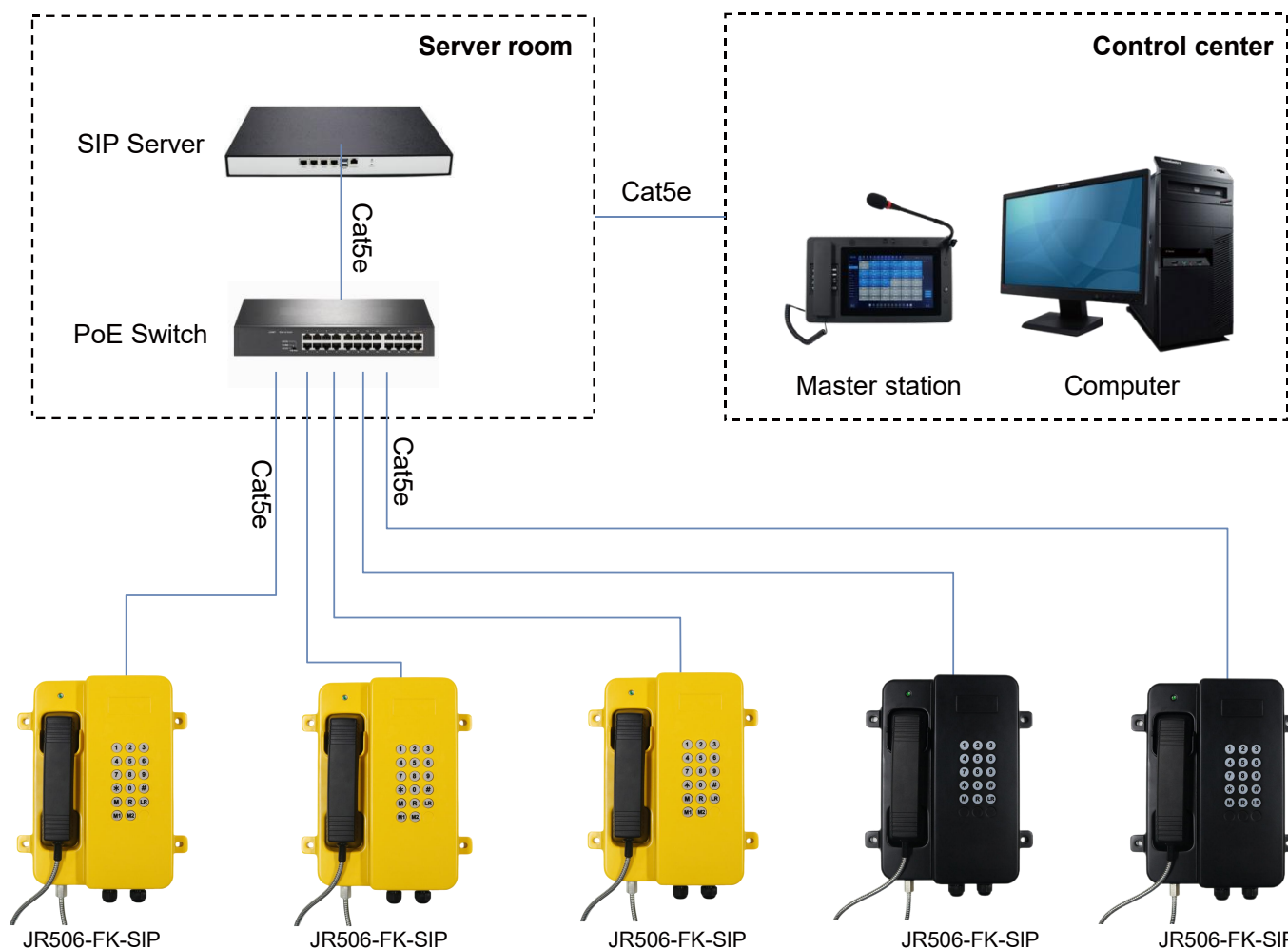
- Full rubber keypad
- “M” for muting
- “R” for flash recall
- “LR” button for last number redial
- Equipped with an LED light that blinks during incoming calls
- Handset with noise-cancelling microphone and heavy duty curly cord
- The handset supports hearing aid compatibility (HAC)
- Magnetic reed hook switch to reduce wear-prone parts
- On wall mounting design, simple installation
- Wiring access, 3xM20 cable gland entry points
- Color: black and yellow available

TECHNICAL SPECIFICATIONS

SIP Specifications	
Power supply	PoE powered or 12V DC powered
Power adapter	100~240VAC 50~60Hz / 12V DC
Power consumption	Idle 1W / Working 2.4W
SIP protocol	SIP 2.0 (RFC3261)
Network port parameters	WAN Port: 10/100Base- T RJ-45 for LAN, Auto MDIX , LAN Port: 10/100Base- T RJ-45 for PC, Auto MDIX
Voice coders	G.711 A/U, G.722 8000/16000, G.723, G.729
Communication mode	Full duplex
Ringing volume	90~95 dB (A) @ 1 meter
Technical Specifications	
Compatible with most SIP-based IP-PBX servers that comply with SIP RFC 3261	
PoE 802.3af enabled (Power-over-Ethernet) or alternate power source	
PoE power supply, supports connecting the external loudspeakers (No external power supply needed)	
Supports automatic dialing with delay after picking up the phone, and 4 groups of sequential calling	
Supports automatic switching between primary and backup servers	
Supports remote Telnet debugging	
Supports MIC mute function	
Supports call transfer	
Supports two relays to remotely control external devices	
Operating temperature -40°C to 65°C / Storage temperature -40°C to 75°C	
M.T.B.F. exceeds 50,000 hours under normal operating conditions	
Network Web Management	
Fully configurable through any internet browser	
Static IP address provisioning or DHCP support	
Product self-diagnostic testing available through the web interface	
Network-adjustable earpiece volume and microphone sensitivity	
Firmware upload via web interface	
Echo cancellation: Supports G.168, and hands-free can support 96ms	
Supports SIP domain, SIP authentication (none, basic, MD5), and DNS name of server	
DTMF: SIPINFO, INBAND, RFC2833	
Dials Plan: Flexible dial-up configuration, support hotline	
Network Features	
WAN/LAN: Supports Bridge mode	
Supports static IP address	
Supports DHCP to obtain an IP address on WAN port	
Supports VLAN	
Supports web config	
Data Protocols: IPv4, TCP, UDP, ICMP, ARP, RTP, SRTP, ONVIF, SNMPv1, RTCP-XR, 802.1x, Static IP/DHCP IP Assignment, IEEE 802.1p/Q, QoS/ToS, HTTP/HTTPS/DHCP, NTP, FTP/TFTP, CDP/LLDP VLAN Configuration, LDAP	

APPLICATION

IP telephony system is an efficient and convenient communication solution that uses Internet connection to implement voice calls and other communication services. Compared with traditional telephone systems, IP telephone system has higher efficiency and convenience.



OPTIONAL ACCESSORIES



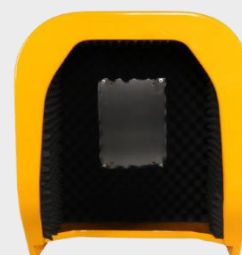
JR-LP-01
LED Light



JR-LP-02
LED Beacon Light

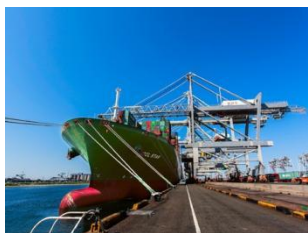


JR-HSA-10/20/25/30/35
Broadcast Horn



JR-TH-01
Acoustic Hood

APPLICATION SCENARIOS



Port



Ship



Highway / Tunnel



Railway



Generating station



Mining industry

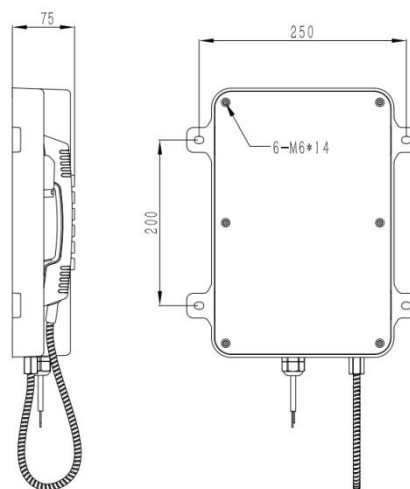
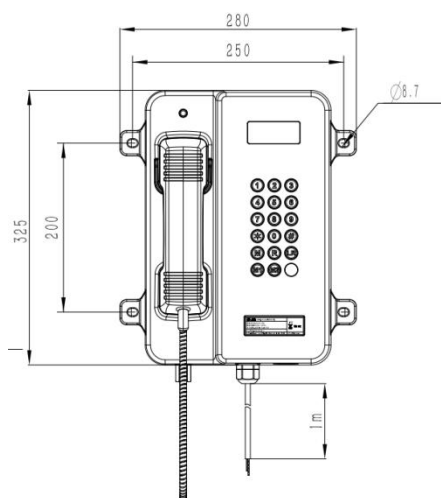


Industrial park



Heavy industry

DIMENSIONS



Package	
Unit size	280*325*75 (mm)
Shipping dimensions	320*350*140 (mm)
Packaging materials	Foam padding, carton
Weight	Gross weight: 4 kg / Net weight: 3.5 kg

